

Why Manage Weeds?

Weeds are plants that become established in places where they are not wanted. Some weeds are relatively benign inhabitants of pastures and agricultural lands, but many are aggressive invaders capable of competing successfully with more desirable species, both native and domesticated. Disturbed soils are especially susceptible to invasion by weeds, so the presence of undesirable plants may point to underlying problems with land management.

The most serious weeds are introduced species that originated in areas of Europe and/or Asia with a climate and elevation similar to that of the Rocky Mountain region. These exotic plants thrive here, where they are unchecked by environmental factors that limited their range and density in the Old World. The invasive potential of these plants makes them a threat to the abundance and diversity of our native plant communities, forage production of our pastures and hay fields, and carrying capacity for wildlife in wildland areas.

Seeds of invasive weeds are brought in from other areas by way of livestock feed, bedding, and manure, and by vehicles, construction equipment, and agricultural implements. Once introduced, these weeds take hold on disturbed sites such as roadsides, new home sites and heavily grazed pastures. If not controlled, the weeds can spread to other areas by wind, waterways, animals, and other factors. The NFWC seeks to prevent establishment of new weed infestations and to minimize or eliminate existing infestations through education and outreach. The Coop provides information on identification and management of the most troublesome weed species in the watershed, and promotes cooperation between public land managers and private landowners in an effort to effectively control weeds across boundaries.

Why are some weeds so invasive and difficult to control?

Some weeds flower multiple times in a season, producing a tremendous amount of seed. Other weeds produce seed that remains viable in the soil for many years.



Dalmatian Toadflax

Some weeds have deep and very extensive root systems to capture moisture, store nutrients and regenerate after grazing, mowing or herbicide treatment.



Canada Thistle has an extensive root system

Some weeds have specialized methods to spread their seeds:

- Flowers that launch seeds
- Seeds stick in socks and fur
- Plants become tumbleweeds



Cheatgrass seeds in socks

Photo: Montana State University Extension



Russian thistle tumbleweeds in a fence line

Other adaptations :

Drought tolerance and the ability to germinate before other plants and access available water first. Allelopathy—secreting chemicals that may inhibit the growth of other plants.

Adaptations to limit grazing: irritating sap, unpleasant taste, sharp awns, stickers, and toxins.



Myrtle spurge has irritating sap

NFWC Member Form

Date: _____

Name: _____

Organization/Agency: _____

Phone: _____

Address: _____

City: _____

State: _____ Zip: _____

Email: _____

Membership Categories:

Individual: _____ \$10.00

Agency/Organization: _____ \$100.00

Please make checks payable to :

North Fork Weed Coop
P.O. Box 176
Livermore CO 80536

What is the North Fork Weed Coop?

The North Fork Weed Coop (NFWC) is an organization of private landowners and public land managers who promote the establishment of desirable vegetation and the management of weeds across boundaries in the watershed of the North Fork of the Cache la Poudre River.

The North Fork Weed Coop provides education and assistance to landowners (including homeowner associations) on management of invasive weeds and pasture establishment and maintenance. Members of the Coop receive newsletters, and have access to a range and pasture seed cost share program, site assessments, management recommendations, mapping, plant identification and the most current weed management practices. The Coop works with Colorado State University and Larimer County to establish research and demonstration sites, and to conduct educational tours.

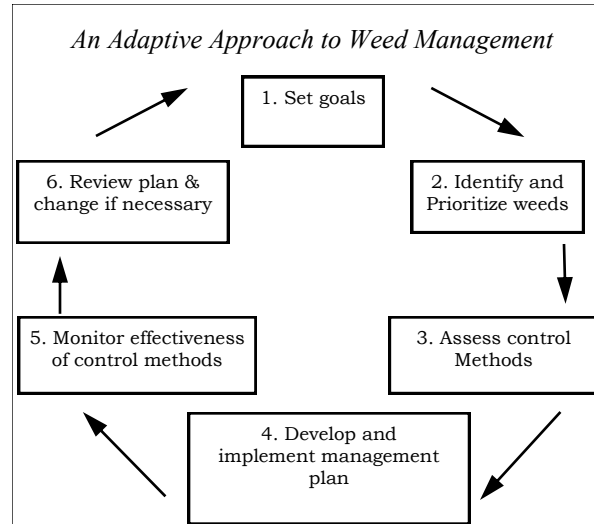
For more information drop us an email at northforkweedcoop@yahoo.com or visit the website at www.northforkweedcoop.org

The Mission of NFWC

- To work cooperatively with willing community members to steward desirable plant and animal communities throughout the North Fork of the Poudre watershed.
- To maximize integrated weed management efforts and promote desirable plant species by coordinating management across both private and public lands, prioritizing resources and strategies, and promoting best management practices.
- To disseminate information and knowledge about integrated weed management and ecological restoration that supports successful land stewardship.
- To create a community-led model of cooperative stewardship that can be exported to other sites.

What is the Best Approach to Managing Weeds?

Set positive goals for the types of desirable plants you wish to have. Manage for the vegetation you want to increase. Adaptive management combines multiple treatment methods, evaluates the results, and then adjusts management based on what works, and how your land is changing.



What Coop Resources are Available ?

- Educational assistance
- Range & pasture reseeding cost share
- Site assessments
- Weed identification
- Recommendations on weed management and revegetation.
- Equipment loan (GPS units, backpack sprayers).
- Weed management tours
- Demonstration projects
- Newsletter, events calendar, speakers, and meetings
- Moral support

*Weed Management on a **Community** Scale*

PO Box 176
Lafayette, CO 80536
RETURN SERVICE REQUESTED

*North Fork
Weed Coop*

North Fork Weed Coop



*Weed Management
on a **Community**
Scale*

How Can I Participate?

Join! Take part in NFWC activities, attend the annual meeting, become a member, and start weeding!

Contact us at:

northforkweedcoop@yahoo.com